

les van

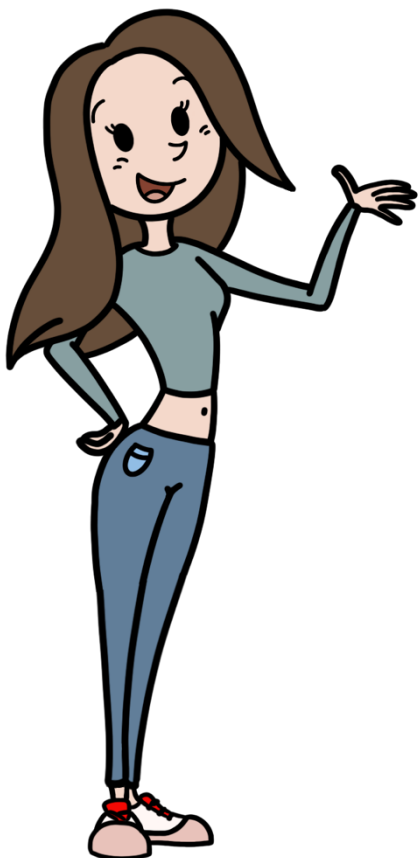


Anne

---

---

## Antwoorden | GROEP 8 | Rekenen



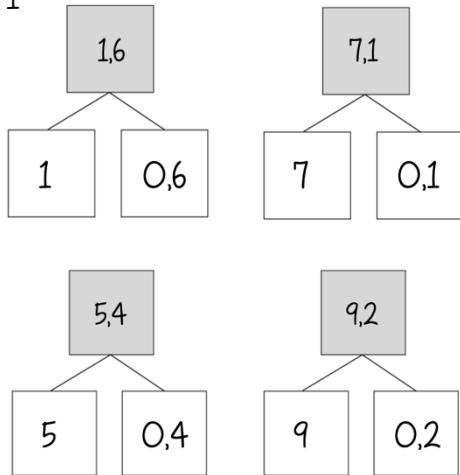
---

Les 1 VAN GEMENGD GETAL NAAR  
KOMMAGETAL

---



1



2

$1 \frac{3}{5}$

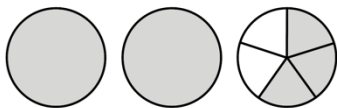
$5 \frac{2}{5}$

$7 \frac{1}{10}$

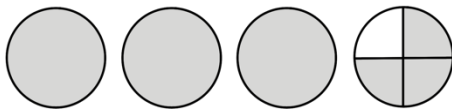
$9 \frac{1}{5}$



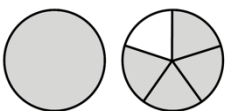
2,6



3,75



1,8



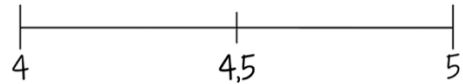

---

Les 1, deel 2 VAN GEMENGD GETAL  
NAAR KOMMAGETAL

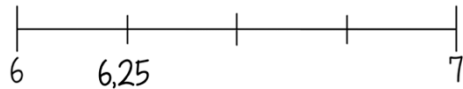
---



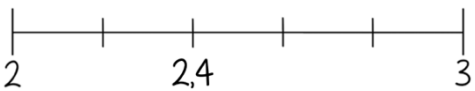
4,5



6,25



8,4



$1 \frac{4}{5}$

$9 \frac{2}{5}$

$89 \frac{2}{5}$

$6 \frac{9}{10}$

$3 \frac{3}{4}$

$16 \frac{3}{10}$

$4 \frac{1}{4}$

$5 \frac{1}{2}$

$99 \frac{9}{10}$



8,4

8,5

2,7

7,75

3,1

14,8

---

Les 2 ONGELIJKNAMIGE BREUKEN  
OPTELLEN

---



1

De som is:

$$\frac{1}{2} + \frac{1}{8} =$$

Breuken gelijknamige maken:

$$\frac{1}{2} = \frac{4}{8}$$

Nieuwe som:

$$\frac{4}{8} + \frac{1}{8} = \frac{5}{8}$$

2

De som is:

$$\frac{1}{5} + \frac{3}{10} =$$

Breuken gelijknamige maken:

$$\frac{1}{5} = \frac{2}{10}$$

Nieuwe som:

$$\frac{2}{10} + \frac{3}{10} = \frac{5}{10}$$

Vereenvoudigen:

$$\frac{5}{10} = \frac{1}{2}$$



1

De som is:

$$\frac{5}{12} + \frac{1}{3} =$$

Breuken gelijknamige maken:

$$\frac{1}{3} = \frac{4}{12}$$

Nieuwe som:

$$\frac{5}{12} + \frac{4}{12} = \frac{9}{12}$$

Vereenvoudigen:

$$\frac{9}{12} = \frac{3}{4}$$

2

De som is:

$$\frac{4}{7} + \frac{1}{4} =$$

Breuken gelijknamige maken:

$$\frac{4}{7} = \frac{16}{28}$$

$$\frac{1}{4} = \frac{7}{28}$$

Nieuwe som:

$$\frac{16}{28} + \frac{7}{28} = \frac{23}{28}$$



$$\frac{1}{6} + \frac{2}{6} = \frac{3}{6} = \frac{1}{2}$$

$$\frac{12}{30} + \frac{10}{30} = \frac{22}{30} = \frac{11}{15}$$

$$\frac{5}{10} + \frac{3}{10} = \frac{8}{10} = \frac{4}{5}$$

$$\frac{9}{30} + \frac{20}{30} = \frac{29}{30}$$

$$\frac{5}{20} + \frac{8}{20} = \frac{13}{20}$$

$$\frac{15}{40} + \frac{24}{40} = \frac{39}{40}$$

$$\frac{5}{6} + \frac{4}{6} = \frac{9}{6} = 1\frac{1}{2}$$

$$\frac{6}{14} + \frac{7}{14} = \frac{13}{14}$$

$$\frac{1}{12} + \frac{9}{12} = \frac{10}{12} = \frac{5}{6}$$

$$\frac{5}{8} + \frac{2}{8} = \frac{7}{8}$$

---

### Les 3 KOMMAGETALLEN VERMENIGVULDIGEN

---



E	t	h	d
4	, 8	7	5



10                    100                    1000



24                    27  
2,4                    2,7  
0,24                    0,27  
0,024                    0,027



0,21                    4,8                    2,7  
3                    0,045                    0,56

$$\frac{1}{5} = \frac{2}{10}$$

Nieuwe som:

$$\frac{5}{10} - \frac{2}{10} = \frac{3}{10}$$



$$\frac{4}{6} - \frac{1}{6} = \frac{3}{6} = \frac{1}{2}$$

$$\frac{27}{30} - \frac{20}{30} = \frac{7}{30}$$

$$\frac{2}{4} - \frac{1}{4} = \frac{1}{4}$$

$$\frac{8}{14} - \frac{7}{14} = \frac{1}{14}$$

$$\frac{5}{8} - \frac{2}{8} = \frac{3}{8}$$

$$\frac{11}{12} - \frac{8}{12} = \frac{3}{12} = \frac{1}{4}$$

$$\frac{5}{6} - \frac{4}{6} = \frac{1}{6}$$

$$\frac{24}{28} - \frac{7}{28} = \frac{17}{28}$$

$$\frac{6}{10} - \frac{3}{10} = \frac{3}{10}$$

$$\frac{8}{12} - \frac{3}{12} = \frac{5}{12}$$

## Les 4 ONGELIJKNAMIGE BREUKEN AFTREKKEN



De som is:

$$\frac{7}{8} - \frac{1}{2} =$$

Breuken gelijknamige maken:

$$\frac{1}{2} = \frac{4}{8}$$

Nieuwe som:

$$\frac{7}{8} + \frac{4}{8} = \frac{3}{8}$$



De som is:

$$\frac{1}{2} - \frac{1}{5} =$$

Breuken gelijknamige maken:

$$\frac{1}{2} = \frac{5}{10}$$



6,75                    6,7                    7



€2,25                    €1,74

€2,49                    €2,00



1 7,62 cm

2 7,6 cm

3 Als je op één decimaal afrondt, staan de centimeters voor de komma en de millimeters achter de komma.

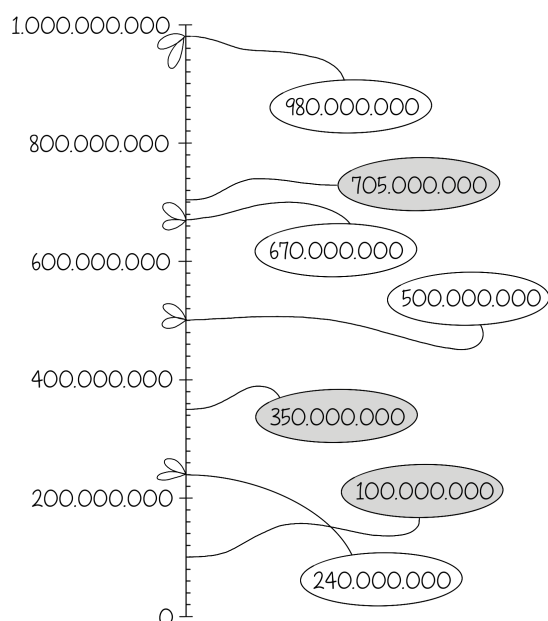
1 354.604.802

2 806.502.409

---

### Les 6 GETALLEN T/M 1 MILJARD

---



1 500.000.000

2 650.000.000

3 750.000.000

4 950.000.000



9.000.000 - 10.000.000 - 11.000.000

998.000.000 - 999.000.000 -  
1.000.000.000

499.000.000 - 500.000.000 -  
501.000.000

546.600.800 - 547.600.800 - 548.600.800



Naar eigen invulling.

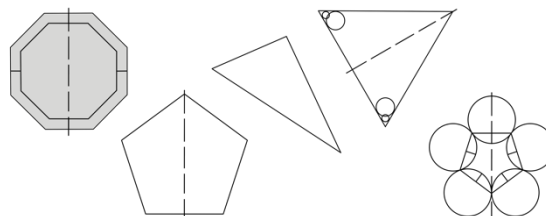


Naar eigen invulling.

---

### Les 7 LIJNSYMMETRIE EN PUNTSYMMETRIE

---




---

### Les 6.2 GETALLEN T/M 1 MILJARD

---



Naar eigen invulling.



Naar eigen invulling.

---

Les 8 KOMMAGETALLEN DOOR ELKAAR  
DELEN

---

*Voorbeeld:*

$$45 : 5 = 9$$

$$9 \times 0,5 = 4,5$$



$$27 : 3 = 9 \quad 9 \times 0,3 = 2,7$$

$$32 : 4 = 8 \quad 8 \times 0,4 = 3,2$$

$$56 : 7 = 8 \quad 8 \times 0,7 = 5,4$$

$$72 : 8 = 9 \quad 9 \times 0,8 = 7,2$$



3

6

32

6



$$2,4 : 0,3 = 7$$